

# MONTHLY MEMBERSHIP PROGRESS REPORT

LOCATION INDIANA

District 25 E

Results as of: 1/31/2023

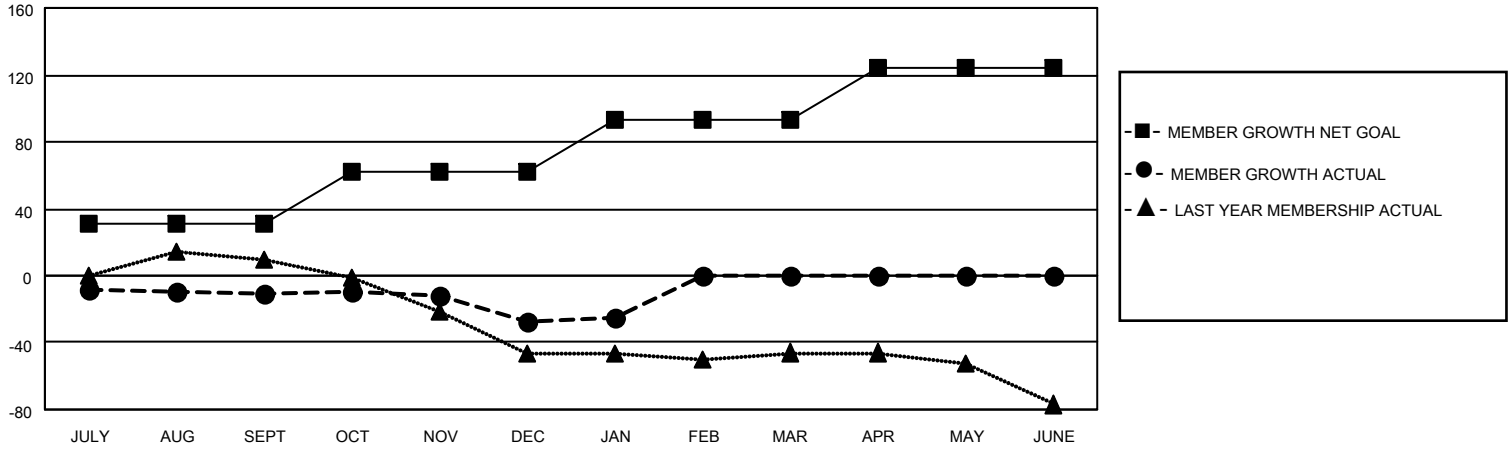
Clubs			
RESULTS FOR 2022-2023			
QUARTER	NEW CLUB GOAL	NEW CLUBS	DROPPED CLUBS
JULY/AUG/SEPT	0	0	0
OCT/NOV/DEC	1	0	0
JAN/FEB/MAR	0	0	0
APR/MAY/JUNE	0	0	0

Members			
RESULTS FOR 2022-2023			
QUARTER	MEMBER GROWTH NET GOAL	MEMBER GROWTH ACTUAL	DROPPED MEMBERS ACTUAL (including transfers)
JULY/AUG/SEPT	31	24	33
OCT/NOV/DEC	31	13	28
JAN/FEB/MAR	31	14	12
APR/MAY/JUNE	31	0	0

**GOALS AND ACTUAL NEW CLUBS CUMULATIVE**



**GOALS AND ACTUAL MEMBERS CUMULATIVE**



**DROPPED CLUBS: 0**

**19 CLUBS OF 53 ADDED 1 OR MORE NEW MEMBERS**

**GENDER DISTRIBUTION**

MALE	766 (63.52%)
FEMALE	440 (36.48%)
NON BINARY	0 (0.00%)
PREFER NOT TO ANSWER	0 (0.00%)

**DROPPED MEMBERS**

[CLICK HERE FOR CUMULATIVE MEMBERSHIP DATA](#)

DECEASED	16
CLUB CANCELLED	0
OTHER	57
<b>TOTAL</b>	<b>73</b>

TOTAL FAMILY UNIT MEMBERS	451
FAMILY MEMBERS PAYING HALF DUES	230